

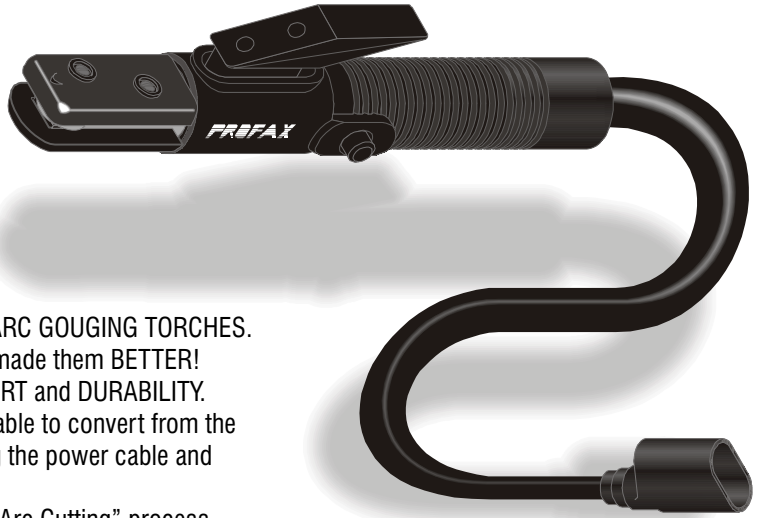


Arc Gouging Torches



Standard Features

- Special High Impact, Heat Resistant Materials
- A Special Hard Copper Alloy w/Excellent Electrical Conductivity
- Unique Valve Design
- Easy Field Repair
- Available w/ 7' Swivel or Non-Swivel Cable Assembly



PROFAX introduces the NEXT GENERATION of ARC GOUGING TORCHES. We have taken our PROVEN DESIGN Torch Models and made them BETTER! We've completely REDESIGNED the HANDLE for COMFORT and DURABILITY.

Our new design gives you the flexibility of being able to convert from the AEC-3000 to the AEC-5000 or back, by simply changing the power cable and swivel head. All other parts interchange.

We build them TOUGH to handle the "Air Carbon-Arc Cutting" process. TRULY the most ECONOMICAL and EFFICIENT Arc Gouging Torches on the MARKET TODAY.

The PROFAX air valve design is unique. It does not require a valve bonnet to hold it in place nor a wrench to remove it. Best of all - the air valve completely shuts the air supply off. The PROFAX torch design allows for ease of field repair for a minimum of down time.

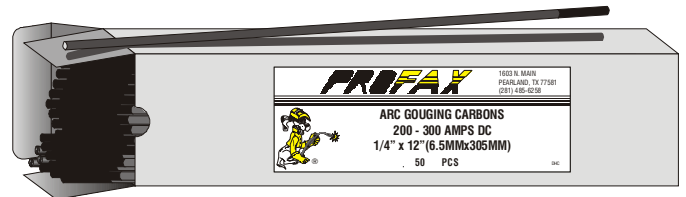
AIR REQUIREMENTS

When using the AEC 3000 or AEC 5000 series arc gouging torches 80 to 100 psi compressed air is recommended.

MODEL NO.	DESCRIPTION	DC AMPS						
		5/32"	3/16"	1/4"	5/16"	3/8"	1/2"	5/8"
PXAEC-3000	Complete gouging torch with 7' cable assembly	90	150	200	250	350	—	—
PXAEC-3000-1	Complete gouging torch with 7' swivel cable assembly	to	to	to	to	to	—	—
PXAEC-3000-12	Complete gouging torch with 12' cable assembly	150	200	400	450	600	—	—
PXAEC-3001	Complete gouging torch less cable assembly							
PXAEC-5000	Complete gouging torch with 7' cable assembly			200	250	350	700	1000
PXAEC-5000-1	Complete gouging torch with 7' swivel cable assembly			to	to	to	to	to
PXAEC-5000-12	Complete gouging torch with 12' cable assembly			400	450	600	900	1250
PXAEC-5001	Complete gouging torch less cable assembly							

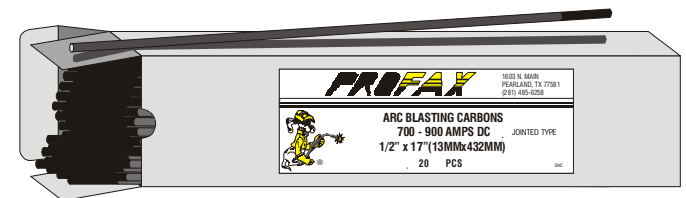
ARC GOUGING CARBONS - DC COPPER COATED POINTED

SIZE IN INCHES	PCS. PER BOX	PCS. PER CARTON	WEIGHT PER CARTON
5/32" x 12"	100	1000	23 lbs.
3/16" x 12"	50	500	17 lbs.
1/4" x 12"	50	500	27 lbs.
5/16" x 12"	50	500	38 lbs.
3/8" x 12"	50	500	53 lbs.
1/2" x 14"	20	200	44 lbs.



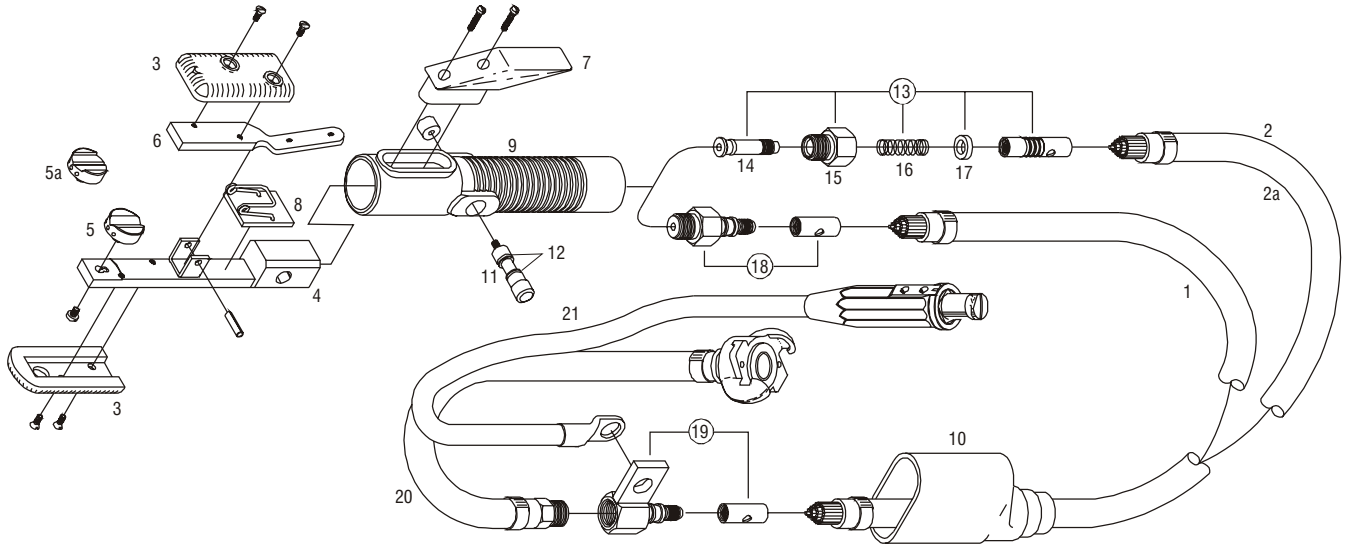
ARC GOUGING CARBONS - DC COPPER COATED JOINTED

SIZE IN INCHES	PCS. PER BOX	PCS. PER CARTON	WEIGHT PER CARTON
3/8" x 17"	50	500	75 lbs.
1/2" x 17"	20	200	54 lbs.
3/4" x 17"	10	1000	52 lbs.



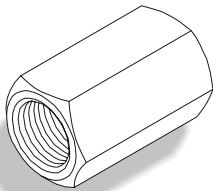


Arc Gouging Torches Parts Breakdown



NO.	DESCRIPTION	PXAEC 3000	PXAEC 3000-1	PXAEC 5000	PXAEC 5000-1
1	Cable assembly 7'	PXPXAEC-302	—	PXAEC-502	—
2	Swivel cable assembly 7'	—	PXAEC-302-1	—	PXAEC-502-1
*2a	Swivel cable assembly 12'	—	PXAEC-312-1	—	PXAEC-512-1
3	Insulator assembly	PXPXAEC-303	PXAEC-303	PXAEC-303	PXAEC-303
4	Lower tong and valve body	PXAEC-304	PXAEC-304	PXAEC-304	PXAEC-304
5	Swivel head with screw	PXAEC-305	PXAEC-305	PXAEC-505	PXAEC-505
*5a	Flat swivel head with screw	PXAEC-305F	PXAEC-305F	PXAEC-505F	PXAEC-505F
6	Upper arm	PXAEC-307	PXAEC-307	PXAEC-307	PXAEC-307
7	Lever assembly with screws	PXAEC-308	PXAEC-308	PXAEC-308	PXAEC-308
8	Spring, insulator assembly	PXAEC-309	PXAEC-309	PXAEC-309	PXAEC-309
9	Handle	PXAEC-350	PXAEC-350	PXAEC-350	PXAEC-350
10	Cable insulating boot	PXAEC-311	PXAEC-311	PXAEC-511	PXAEC-511
11	Spool assembly	PXAEC-316R	PXAEC-316R	PXAEC-316R	PXAEC-316R
12	O-ring (package of 2)	PXAEC-316-1R	PXAEC-316-1R	PXAEC-316-1R	PXAEC-316-1R
13	Swivel joint assembly	—	PXAEC-321	—	PXAEC-521
14	Swivel joint stem	—	PXAEC-322	—	PXAEC-522
15	Swivel joint male nut	—	PXAEC-323	—	PXAEC-523
16	Swivel joint spring	—	PXAEC-326	—	PXAEC-526
17	Swivel joint bushing	—	PXAEC-327	—	PXAEC-527
18	Male cable connector	PXAEC-3-028	PXAEC-3-028	PXAEC-5-028	PXAEC-5-028
19	Female cable connector	PXAEC-3-029	PXAEC-3-029	PXAEC-5-029	PXAEC-5-029
*20	Air hose extension	PXAEC-3-040	PXAEC-3-040	PXAEC-3-040	PXAEC-3-040
*21	Power cable extension	PXAEC-3-041-TW	PXAEC-3-041-TW	PXAEC-3-041-TW	PXAEC-3-041-TW

* Items are optional



PXAEC-4000 Adapter

Allows you to use the PROFAX power cables on the K-4000* torch.

*K-4000 is a registered trademark of Tweco Products Inc.